

How to Install and Configure Secure File Transfer Client

- 1.) To install SSH Secure Shell and Secure File Transfer go to:

<http://ftp.ssh.com/pub/ssh/>

Download the current SSHSecureShellClient

Save the file to the desktop

Once the download is completed run the program and Click **Next**

If you agree with the License Terms Click **Yes**

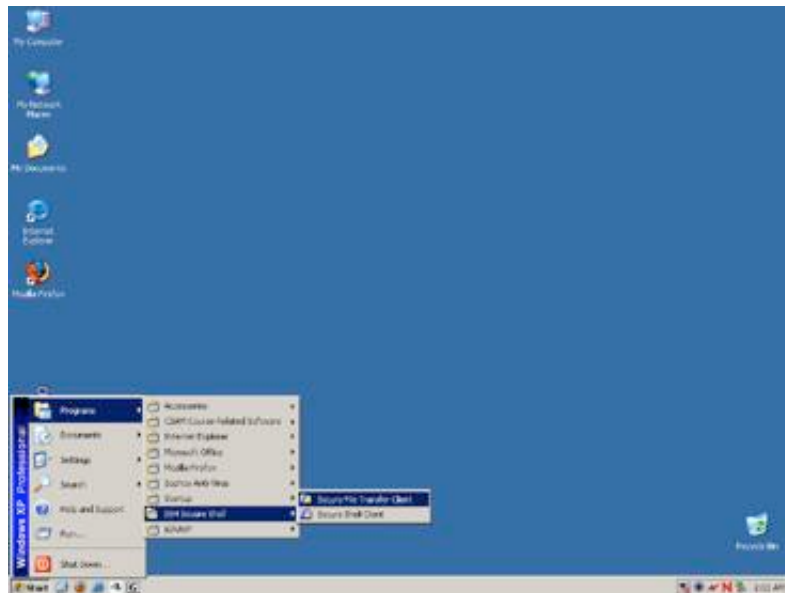
Click **Next** for default installation location

Click **Next**, then **Next** again for default Components

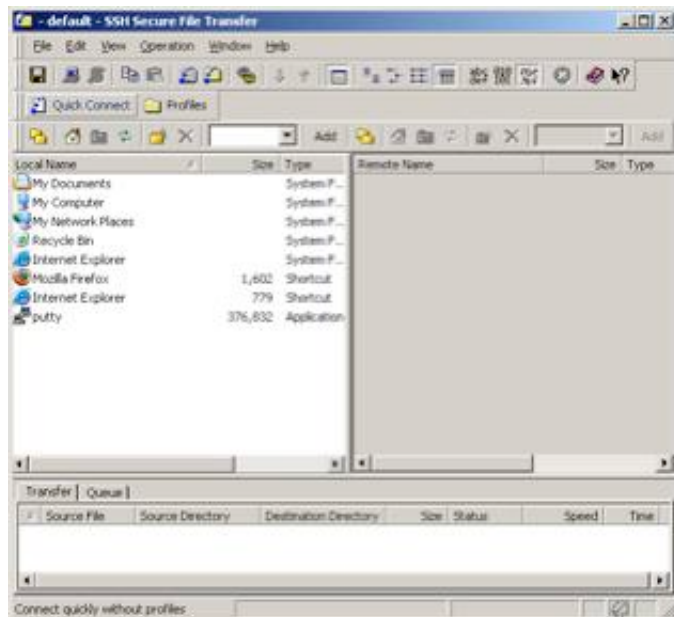
If you are ready to install, click **Next** and when completed click **Finish**

- 2.) Navigate to the Secure File Transfer Client Shortcut in the Start-menu

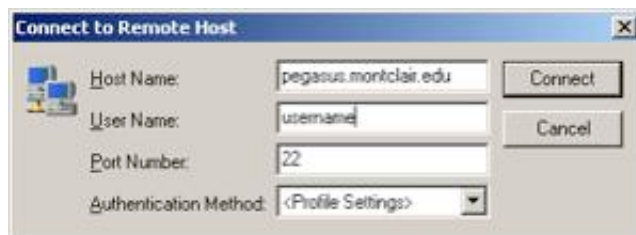
Start>Programs>SSH Secure Shell> Secure File Transfer Client



- 3.) Click Quick Connect on the lower menu bar in the application



4.) Type Pegasus.montclair.edu into the Host Name field and your username into the User Name field.



5.) If the below message appears please click Yes



6.) The application will request your password for access into the system



7.) After successfully logging into Pegasus it will ask for you to Add Profile. Type Pegasus and click Add to Profiles

8.) Future connections into Pegasus can now be accessed quickly from the Profiles menu in the lower menu bar, after the SSH Secure Shell has been started.