

How to Install and Configure SSH Secure Shell

- 1.) To install SSH Secure Shell and Secure File Transfer go to:

<http://ftp.ssh.com/pub/ssh/>

Download the current SSHSecureShellClient

Save the file to the desktop

Once the download is completed run the program and

Click **Next**

If you agree with the License Terms Click **Yes**

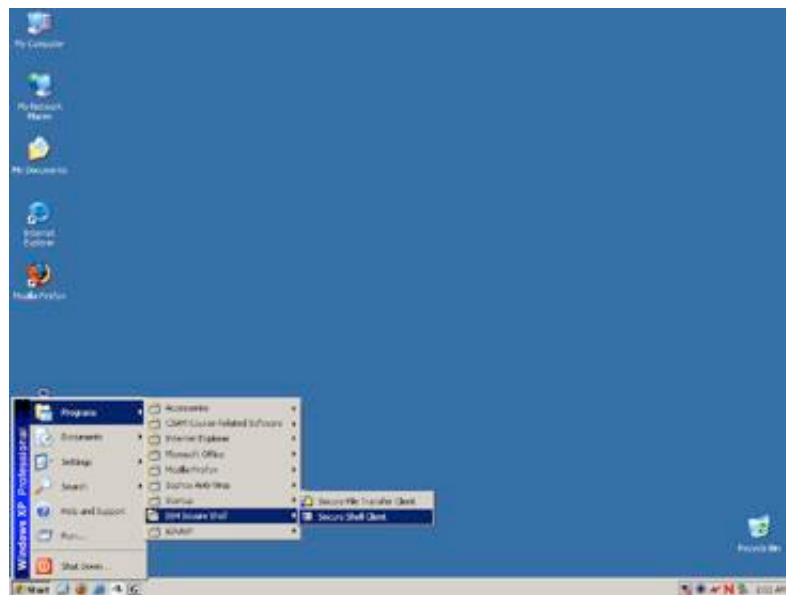
Click **Next** for default installation location

Click **Next**, then **Next** again for default Components

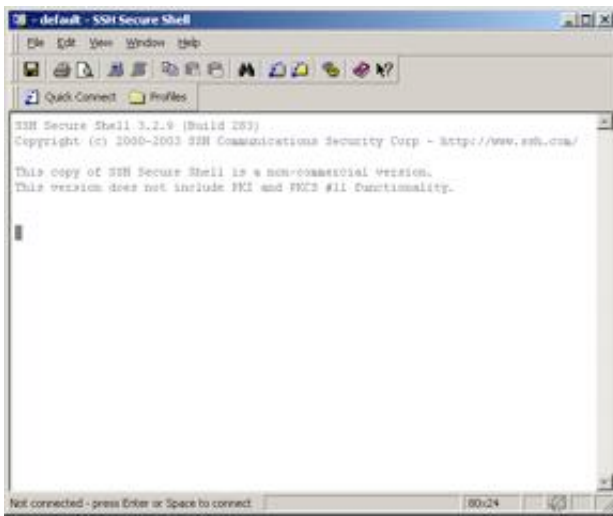
If you are ready to install, click **Next** and when completed click **Finish**

- 2.) Navigate to the Secure Shell Client Shortcut in the Start-menu

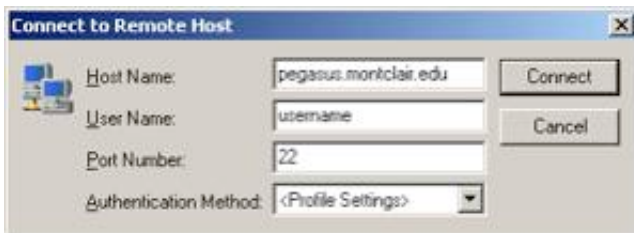
Start>Programs>SSH Secure Shell>Secure Shell Client



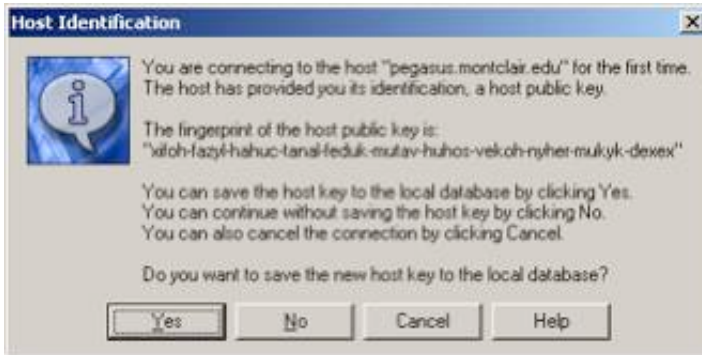
- 3.) Click Quick Connect on the lower menu bar in the application



4.) Type Pegasus.montclair.edu into the Host Name field and your username into the User Name field.



5.) If the below message appears please click Yes



6.) The application will request your password for access into the system



7.) After successfully logging into Pegasus it will ask for you to Add Profile. Type Pegasus and click Add to Profiles



